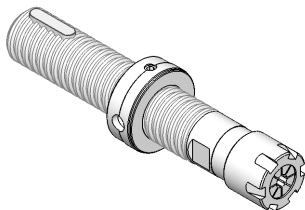


INDICE DEGLI ATTACCHI TRAPEZIO - DIN 6327 E DIN 238

INDEX OF SHANKS AUTOMOTIVE - DIN 6327 AND DIN 238

DIN 6327 - PORTAPINZA ER CON GHIERA MINI

DIN 6327 ER COLLET CHUCKS
WITH MINI NUT

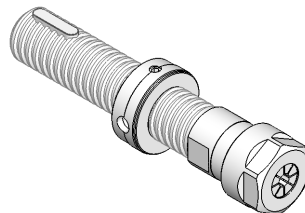


Programma
completo
a pag.

46

DIN 6327 - PORTAPINZA ER CON GHIERA ESAGONALE

DIN 6327 ER COLLET CHUCKS
WITH HEXAGONAL NUT

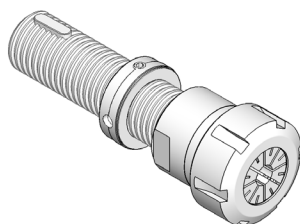


Programma
completo
a pag.

46

DIN 6327 - PORTAPINZA ER CON GHIERA STANDARD

DIN 6327 ER COLLET CHUCKS
WITH STANDARD NUT

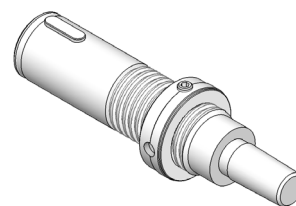


Programma
completo
a pag.

47

DIN 6327 - RIDUZIONI A DIN 238

DIN 6327 ADAPTERS
TO DIN 238

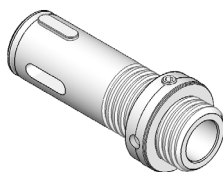


Programma
completo
a pag.

47

DIN 6327 - RIDUZIONI A CONO MORSE

DIN 6327 ADAPTERS
TO MORSE TAPER

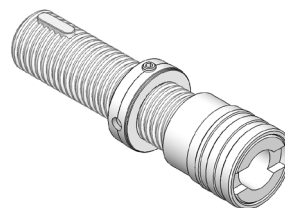


Programma
completo
a pag.

48

DIN 6327 - MASCHIATORI A CAMBIO RAPIDO

DIN 6327 QUICK CHANGE
TAP HOLDERS

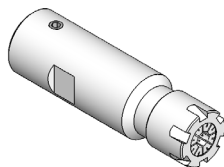


Programma
completo
a pag.

49

DIN 238 - PORTAPINZA ER

DIN 238 ER COLLET CHUCKS

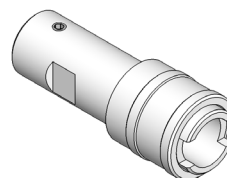


Programma
completo
a pag.

68

DIN 238 - MASCHIATORI A CAMBIO RAPIDO

DIN 238 QUICK CHANGE
TAP HOLDERS

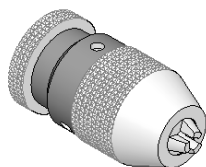


Programma
completo
a pag.

68

DIN 238 - AUTOSERRANTI PRECISIONE STANDARD

DIN 238 STANDARD PRECISION
DRILL HOLDERS

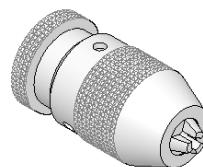


Programma
completo
a pag.

69

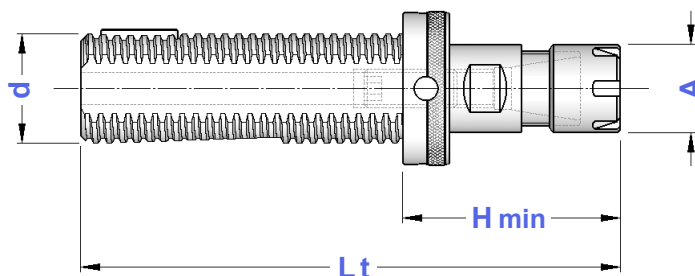
DIN 238 - AUTOSERRANTI DI ALTA PRECISIONE







DIN 238 HIGH PRECISION
DRILL HOLDERS

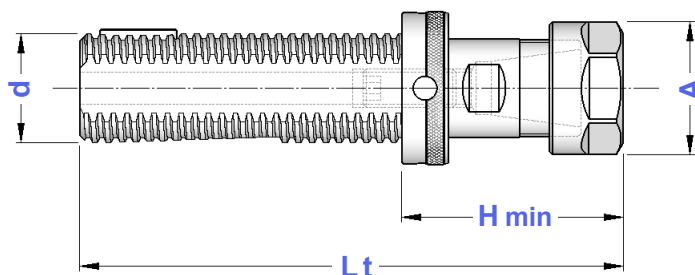








Programma
completo
a pag.

69

**DIN
6327****PORTAPINZE ER CON ATTACCO TRAPEZIO - GHIERA MINI**
AUTOMOTIVE SHANK ER - DIN 6499 COLLET CHUCKS WITH MINI NUT

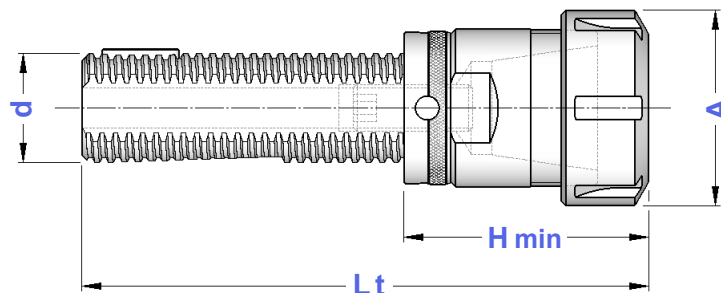
TIPO	Art.	d	Lt	HMIN	A	CAPACITA'						
TR 8 - ER 8 GM	3146	8	75	35	12	1 ÷ 5	2964	0101	—	0373	5717	0554
TR10 - ER11 GM	3147	10	95	45	16	1 ÷ 7	2965	0103	—	0432	5718	5573
TR12 - ER11 GM	3148	12	95	45	16	1 ÷ 7	2966	0103	0181	0432	5718	5573
TR12 - ER16 GM	3149	12	103	53	22	1 ÷ 10	2966	0103	0181	1229	5719	0364
TR16 - ER16 GM	3150	16	120	47	22	1 ÷ 10	2967	0107	0181	1229	5719	0364
TR16 - ER20 GM	3151	16	130	57	28	1 ÷ 13	2967	0107	0181	1230	5720	0787
TR20 - ER16 GM	3153	20	135	59	22	1 ÷ 10	2968	0107	0186	1229	5719	0364
TR20 - ER20 GM	3154	20	135	59	28	1 ÷ 13	2968	0107	0186	1230	5720	0787
TR20 - ER25 GM	3155	20	135	59	35	1 ÷ 16	2968	0107	0186	1231	5721	0996

**DIN
6327****PORTAPINZA ER CON ATTACCO TRAPEZIO - GHIERA ESAGONALE**
AUTOMOTIVE SHANK ER - DIN 6499 COLLET CHUCKS WITH HEXAGONAL NUT

TIPO	Art.	d	Lt	HMIN	A	CAPACITA'						
TR 16 - ER11 GE	3137	16	110	37	19	1 ÷ 7	2967	0107	0181	1157	2905	5573
TR 16 - ER16 GE	3138	16	122	49	28	1 ÷ 10	2967	0107	0181	1214	2906	0364
TR 20 - ER16 GE	3139	20	128	52	28	1 ÷ 10	2968	0107	0186	1214	2906	0364
TR 20 - ER20 GE	3140	20	135	59	34	1 ÷ 13	2968	0107	0186	1215	2907	0787
TR 28 - ER16 GE	3161	28	140	57	28	1 ÷ 10	2969	0108	0186	1214	2906	0364
TR 28 - ER20 GE	3141	28	140	57	34	1 ÷ 13	2969	0108	0186	1215	2907	0787

**DIN
6327**

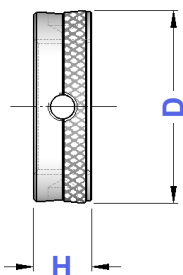
PORTAPINZE ER CON ATTACCO TRAPEZIO - GHIERA STANDARD
AUTOMOTIVE SHANK ER - DIN 6499 COLLET CHUCKS WITH STANDARD NUT



TIPO	Art.	d	Lt	HMIN	A	CAPACITA'						
TR 28 - ER 25	3142	28	140	57	42	1 ÷ 16	2969	0108	0188	4995	3669	0996
TR 28 - ER 32	3143	28	147	64	50	2 ÷ 20	2969	0108	0188	4996	3670	0988
TR 28 - ER 40	3162	28	190	107	63	3 ÷ 30	2969	0108	0188	4997	3671	0821
TR 36 - ER 25	3973	36	163	57	42	1 ÷ 16	2970	0111	0190	4995	3669	0996
TR 36 - ER 32	3144	36	165	61	50	2 ÷ 20	2970	0111	0190	4996	3670	0988
TR 36 - ER 40	3145	36	186	82	63	3 ÷ 30	2970	0111	0190	4997	3671	0821
TR 48 - ER 32	3667	48	200	74	50	2 ÷ 20	2971	0114	0191	4996	3670	0988
TR 48 - ER 40	3159	48	207	81	63	3 ÷ 30	2971	0114	0195	4997	3671	0821

**DIN
6327**

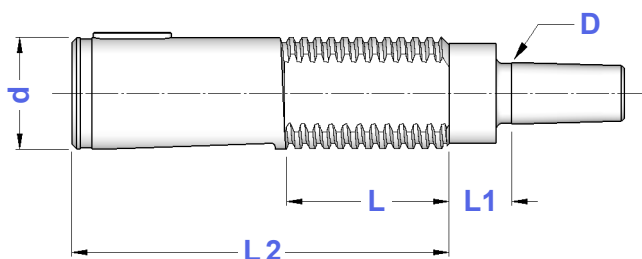
GHIERE DI REGISTRAZIONE DIN 6327
DIN 6327 ADJUSTMENT NUTS



TIPO	Art.	H	D	
GH - TR 8 x 1	2964	10	14,8	0011
GH - TR10 x1,5	2965	12	17,8	0017
GH - TR12 x1,5	2966	12	19,7	0017
GH - TR16 x1,5	2967	12	24,6	0019
GH - TR20 x 2	2968	12	31,6	0019
GH - TR28 x 2	2969	12	39,6	0020
GH - TR36 x 2	2970	14	49,6	0020
GH - TR48 x 2	2971	18	66,6	0021

**DIN
6327**

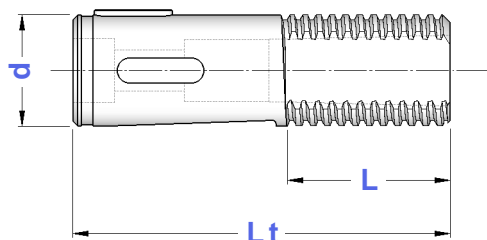
ATTACCHI PER MANDRINI PORTAPUNTA - DIN 238
SHANKS FOR DRILL CHUCKS DIN 238 TYPE



TIPO	Art.	d	L	L1	L2	D	
TR 28 - B16	2774	28	42	21	95	15,733	2969
TR 36 - B16	2775	36	50	21	118	15,733	2970

**DIN
6327****ASTUCCI REGISTRABILI A CM - TIPO "E"**

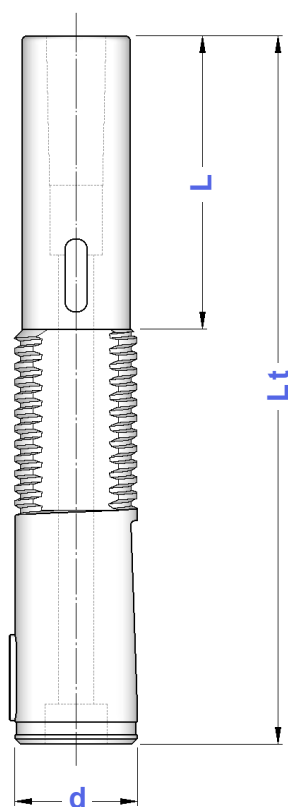
DIN 6327 ADJUSTABLE ADAPTERS - "E" TYPE



TIPO	Art.	d	L	Lt		
E 16 x 1	2984	16	40	85	0258	2967
E 20 x 1	2985	20	40	88	0107	2968
E 28 x 1	2986	28	42	95	0108	2969
E 28 x 2	3167	28	42	95	0108	2969
E 36 x 1	3407	36	50	118	0111	2970
E 36 x 2	3168	36	50	118	0111	2970
E 36 x 3	3410	36	50	118	0111	2970
E 48 x 2	3198	48	65	144	0114	2971
E 48 x 3	3411	48	65	144	0114	2971
E 48 x 4	3413	48	65	144	0114	2971

**DIN
6327****ASTUCCI REGISTRABILI A CM - TIPO "G"**

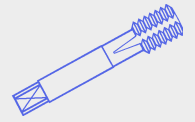
DIN 6327 ADJUSTABLE ADAPTERS - "G" TYPE



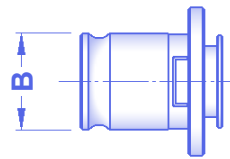
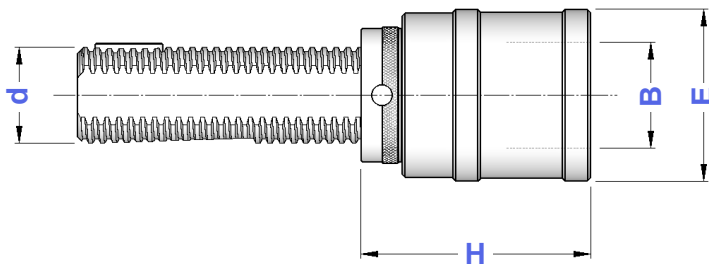
TIPO	Art.	d	L	Lt	
G 16 x 1 x 25	5340	16	25	110	2967
G 16 x 1 x 50	5341		50	135	
G 16 x 1 x 75	5342		75	160	
G 16 x 1 x 100	5343		100	185	
G 20 x 1 x 25	5344	20	25	113	2968
G 20 x 1 x 50	5345		50	138	
G 20 x 1 x 75	5346		75	163	
G 20 x 1 x 100	5347		100	188	
G 28 x 1 x 25	5348	28	25	120	2969
G 28 x 1 x 50	5349		50	145	
G 28 x 1 x 75	5350		75	170	
G 28 x 1 x 100	5351		100	195	
G 28 x 2 x 25	5352	28	25	120	2969
G 28 x 2 x 50	5353		50	145	
G 28 x 2 x 75	5354		75	170	
G 28 x 2 x 100	5355		100	195	
G 36 x 2 x 30	5356	36	30	148	2970
G 36 x 2 x 60	5357		60	178	
G 36 x 2 x 90	5358		90	208	
G 36 x 2 x 120	5359		120	238	
G 36 x 3 x 30	5360	36	30	148	2970
G 36 x 3 x 60	5361		60	178	
G 36 x 3 x 90	5362		90	208	
G 36 x 3 x 120	5363		120	238	
G 48 x 3 x 40	5364	48	40	184	2971
G 48 x 3 x 80	5365		80	224	
G 48 x 3 x 120	5366		120	264	
G 48 x 3 x 160	5367		160	304	
G 48 x 4 x 40	5368	48	40	184	2971
G 48 x 4 x 80	5372		80	224	
G 48 x 4 x 120	5373		120	264	
G 48 x 4 x 160	5374		160	304	

**DIN
6327****MASCHIATORI ATTACCO TRAPEZIO A CAMBIO RAPIDO
SENZA COMPENSAZIONE**

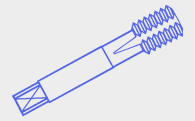
QUICK CHANGE TAP HOLDERS WITHOUT COMPENSATION



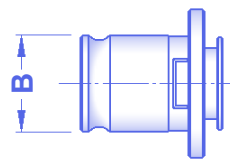
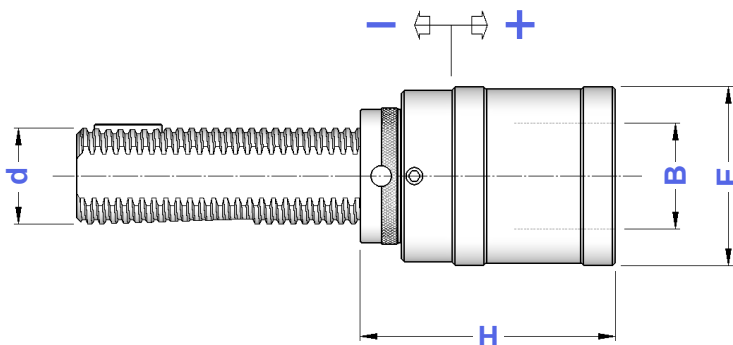
TIPO	Art.	d	H	E	B	
TR 16 - B. 0 FISSO	5198	16	45	26	13	M 1 ÷ M 10
TR 16 - B. 1 FISSO	5199	16	49	36	19	M 3 ÷ M 12 (*M16)
TR 20 - B. 1 FISSO	5211	20	49	36	19	M 3 ÷ M 12 (*M16)
TR 20 - B. 2 FISSO	5212	20	66	53	31	M 6 ÷ M 20 (*M30)
TR 28 - B. 1 FISSO	5213	28	49	36	19	M 3 ÷ M 12 (*M16)
TR 28 - B. 2 FISSO	5214	28	66	53	31	M 6 ÷ M 20 (*M30)
TR 36 - B. 1 FISSO	5215	36	49	36	19	M 3 ÷ M 12 (*M16)
TR 36 - B. 2 FISSO	5216	36	68	53	31	M 6 ÷ M 20 (*M30)

* Bussole con grani
Adapters with screws**Bussole a Maschiare
da pag. 172 a pag. 175
del Catalogo Generale**Tap Adapters
on General Catalogue
from page 172 to page 175**DIN
6327****MASCHIATORI ATTACCO TRAPEZIO A CAMBIO RAPIDO
DOPPIA COMPENSAZIONE**

DOUBLE COMPENSATION QUICK CHANGE TAP HOLDERS

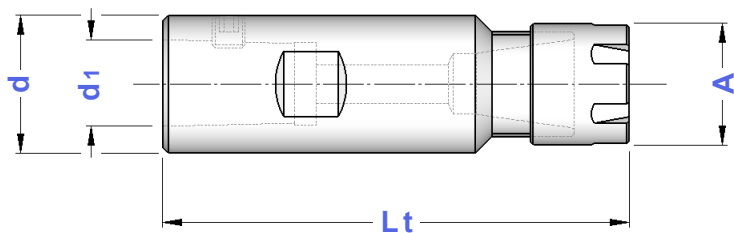


TIPO	Art.	d	H	E	B	COMPENSAZIONE	
TR 16 - B. 0	3811	16	49	26	13	- 6,5 + 6,5	M 1 ÷ M 10
TR 16 - B. 1	3564	16	51	36	19	- 7,5 + 7,5	M 3 ÷ M 12 (*M16)
TR 20 - B. 0	3156	20	49	26	13	- 6,5 + 6,5	M 1 ÷ M 10
TR 20 - B. 1	3565	20	51	36	19	- 7,5 + 7,5	M 3 ÷ M 12 (*M16)
TR 20 - B. 2	3926	20	75	53	31	-12,5 +12,5	M 6 ÷ M 20 (*M30)
TR 28 - B. 1	3566	28	51	36	19	- 7,5 + 7,5	M 3 ÷ M 12 (*M16)
TR 28 - B. 2	3567	28	76	53	31	-12,5 +12,5	M 6 ÷ M 20 (*M30)
TR 28 - B. 3	3220	28	108	78	48	-20,0 +20,0	M14 ÷ M 33 (*M48)
TR 36 - B. 1	3568	36	53	36	19	- 7,5 + 7,5	M 3 ÷ M 12 (*M16)
TR 36 - B. 2	3569	36	78	53	31	-12,5 +12,5	M 6 ÷ M 20 (*M30)
TR 36 - B. 3	3570	36	110	78	48	-20,0 +20,0	M14 ÷ M 33 (*M48)
TR 48 - B. 3	3571	48	114	78	48	20,0 +20,0	M14 ÷ M 33 (*M48)





* Bussole con grani
Adapters with screws**Bussole a Maschiare
da pag. 172 a pag. 175
del Catalogo Generale**Tap Adapters
on General Catalogue
from page 172 to page 175**I maschiatori sono fornibili anche con la sola compensazione a trazione (SFILAMENTO)**
Tap holders are also available with traction compensation only (TENSION ONLY)

**DIN
238****PORTAPINZE ER ATTACCO DIN 238 - GHIERA MINI**

ER - DIN 6499 COLLET CHUCKS WITH MINI NUT

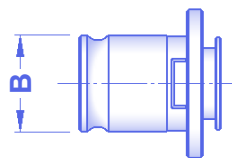
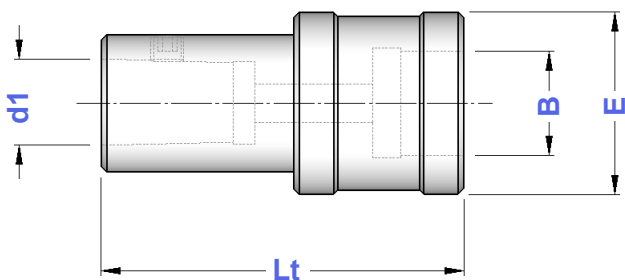


Fornibili anche
con attacco Jacobs
Also available with Jacobs shank

TIPO	Art.	Lt	d1	d	A	CAPACITA'				
"B12" - ER 11 GM	3193	63	12,06	25	16	1 ÷ 7	0370	0432	5718	5573
"B12" - ER 16 GM	3194	55	12,06	25	22	1 ÷ 10	0020	1229	5719	0364
"B12" - ER 20 GM	3221	67	12,06	25	28	1 ÷ 13	0020	1230	5720	0787
"B16" - ER 16 GM	3195	85	15,73	25	22	1 ÷ 10	0020	1229	5719	0364
"B16" - ER 20 GM	3196	80	15,73	25	28	1 ÷ 13	0020	1230	5720	0787
"B18" - ER 20 GM	3197	74	17,78	28	28	1 ÷ 13	0020	1230	5720	0787

**DIN
238****MASCHIATORI ATTACCO DIN 238 SENZA COMPENSAZIONE**

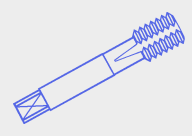
TAP HOLDERS WITHOUT COMPENSATION

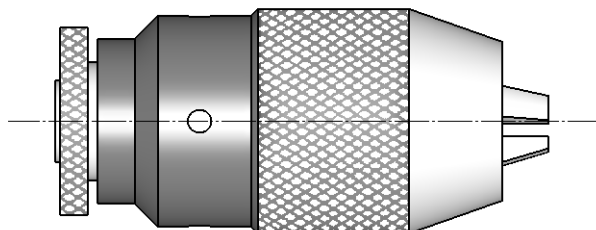


Bussole a Maschiare
da pag. 172 a pag. 175
del Catalogo Generale

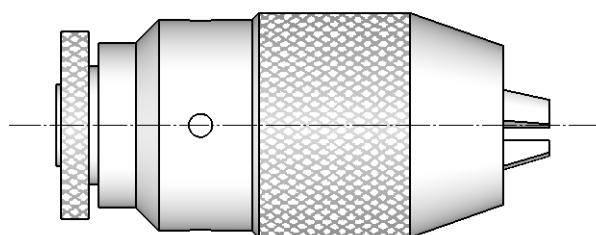
Tap Adapters
on General Catalogue
from page 172 to page 175

* Bussole con grani
Adapters with screws

TIPO	Art.	Lt	d1	E	B	
"B12" - B.0 FISSO	0244	55	12,06	26	13	M 1 ÷ M 10
"B12" - B.1 FISSO	0320	59	12,06	33	19	M 3 ÷ M 12 (*M16)
"B16" - B.1 FISSO	0340	65	15,73	33	19	M 3 ÷ M 12 (*M16)
"B16" - B.2 FISSO	0071	84	15,73	50	31	M 6 ÷ M 20 (*M30)
"B18" - B.1 FISSO	0384	73	17,78	33	19	M 3 ÷ M 12 (*M16)
"B18" - B.2 FISSO	0072	92	17,78	50	31	M 6 ÷ M 20 (*M30)

**DIN
238****MANDRINI AUTOSERRANTI**
KEYLESS DRILL CHUCKS**PRECISIONE****0,07**

TIPO	Art.	CAPACITA'			
"B 10" - DC 6	2800	0,5 ÷ 6,5	9010	9018	—
"B 10" - DC 8	2801	0 ÷ 8	9011	9019	2368
"B 10" - DC 10	2834	0 ÷ 10	9012	9020	2369
"B 12" - DC 8	2802	0 ÷ 8	9011	9019	2368
"B 12" - DC 10	2803	0 ÷ 10	9012	9020	2369
"B 12" - DC 13	2804	0 ÷ 13	9013	9021	2370
"B 16" - DC 10	2805	0 ÷ 10	9014	9022	2369
"B 16" - DC 13	2806	0 ÷ 13	9013	9021	2370
"B 16" - DC 16	2807	3 ÷ 16	9015	9023	2371
"B 18" - DC 16	2808	3 ÷ 16	9015	9023	2371

**DIN
238****MANDRINI AUTOSERRANTI DI ALTA PRECISIONE**
HIGH PRECISION KEYLESS DRILL CHUCKS**PRECISIONE****≤ 0,05**

TIPO	Art.	CAPACITA'			
"B 10" - DC 8 Precision	2853	0 ÷ 8	9011	9019	2368
"B 10" - DC 10 Precision	2854	0 ÷ 10	9012	9020	2369
"B 12" - DC 8 Precision	2810	0 ÷ 8	9011	9019	2368
"B 12" - DC 10 Precision	2856	0 ÷ 10	9012	9020	2369
"B 12" - DC 13 Precision	2858	0 ÷ 13	9016	9021	2370
"B 16" - DC 10 Precision	2811	0 ÷ 10	9014	9022	2369
"B 16" - DC 13 Precision	2812	0 ÷ 13	9016	9021	2370
"B 16" - DC 16 Precision	2813	3 ÷ 16	9017	9023	2371
"B 18" - DC 16 Precision	2818	3 ÷ 16	9017	9023	2371