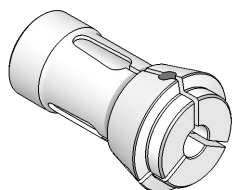


INDICE DELLE PINZE DI SERRAGGIO

INDEX OF CLAMPING COLLETS

PINZE DI CHIUSURA A CONO SEMPLICE

SINGLE CONE
CLAMPING COLLETS

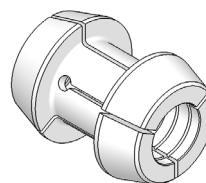


Programma
completo
da pag.

202

PINZE DI CHIUSURA A DOPPIO CONO

DOUBLE CONE
CLAMPING COLLETS

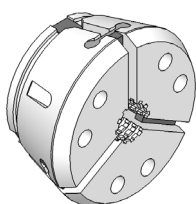


Programma
completo
a pag.

204

TESTE DI CHIUSURA

CLAMPING HEADS

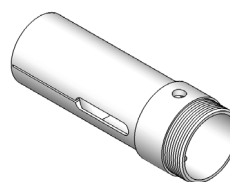


Programma
completo
a pag.

204

CONTROPINZE DI AVANZAMENTO

FEED FINGERS

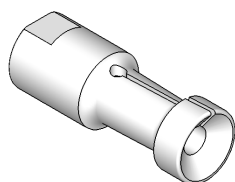


Programma
completo
a pag.

205

PINZE PER CARICATORE

COLLETS FOR BAR FEEDER

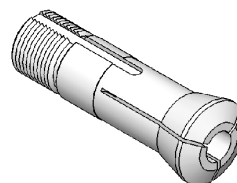


Programma
completo
da pag.

206

PINZE TIRATE CON FILETTO

DRAWBACK COLLETS

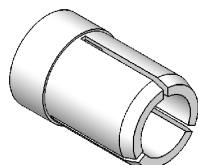


Programma
completo
a pag.

209

PINZE PER ROTANTI

COLLETS FOR ROTARIES

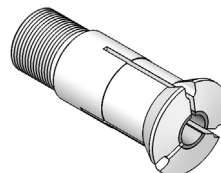


Programma
completo
a pag.

210

BUSSOLE TIPO "TIRATO" CON METALLO DURO

THREADED GUIDE BUSHINGS
WITH SOLID CARBIDE

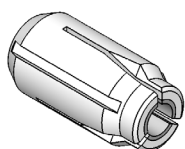


Programma
completo
a pag.

211

BUSSOLE TIPO "SPINTO" CON METALLO DURO

PUSH GUIDE BUSHINGS
WITH SOLID CARBIDE

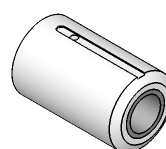


Programma
completo
a pag.

211

BUSSOLE TIPO "FISSO" CON METALLO DURO

FIXED GUIDE BUSHINGS
WITH SOLID CARBIDE



Programma
completo
a pag.

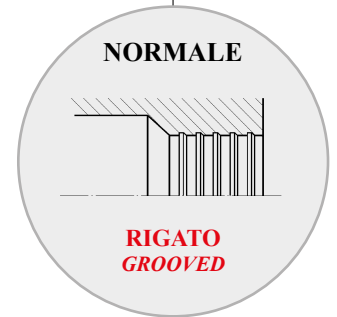
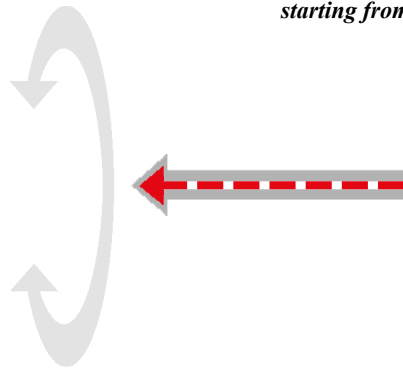
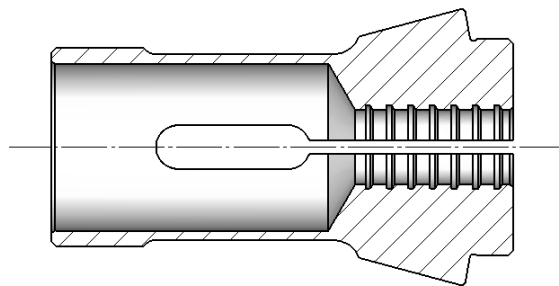
211

ESECUZIONI DEGLI INTERNI NELLE PINZE TONDE

BORE EXECUTIONS

PINZA TONDA CON INTERNO RIGATO
a partire da \varnothing 8 mm

GROOVED INSIDE ROUND COLLET
starting from \varnothing 8 mm



Caratteristica: Tenuta assiale in foratura

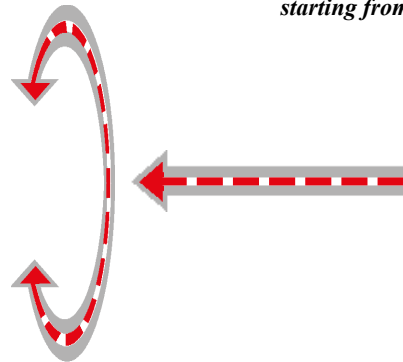
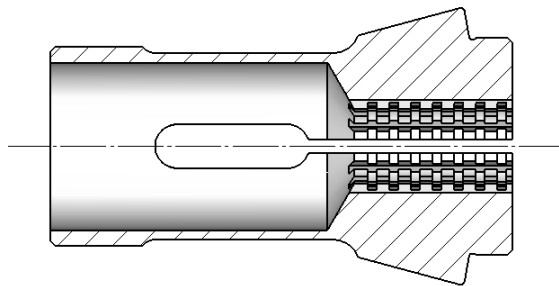
Esempio di Ordinazione \Rightarrow Pinza Tonda Rigata = Art. 0709

Characteristic: *Drilling Axial seal*

Example for Order \Rightarrow 173E Grooved = Art. 0709

PINZA TONDA CON INTERNO QUADRETTATO
a partire da \varnothing 8 mm

SERRATED INSIDE ROUND COLLET
starting from \varnothing 8 mm



Caratteristica: Tenuta assiale in foratura + tenuta in rotazione come momento torcente

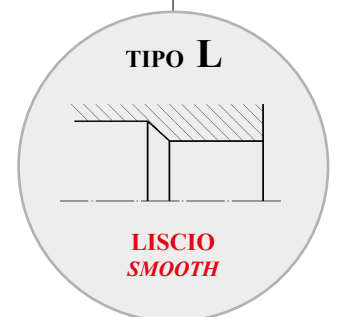
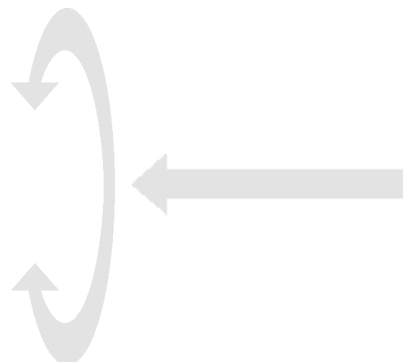
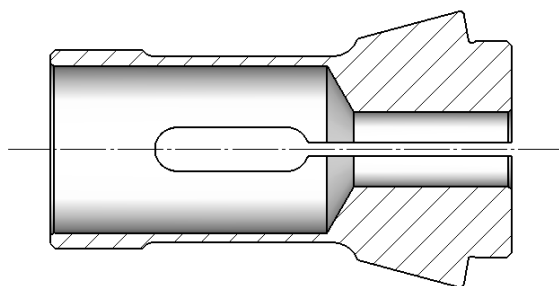
Esempio di Ordinazione \Rightarrow Pinza Tonda Quadrettata = Art. 0709 **S**

Characteristic: *Drilling Axial seal + rotatory seal as twisting moment*

Example for Order \Rightarrow 173E Serrated = Art. 0709 **S**

PINZA TONDA CON INTERNO LISCIO

SMOOTH INSIDE ROUND COLLET






Caratteristica: Adatta per il bloccaggio di diametri finiti: non segna la superficie del materiale

Esempio di Ordinazione \Rightarrow Pinza Tonda Liscia = Art. 0709 **L**

Characteristic: *Suitable to lock finished diameter: doesn't score material surface*

Example for Order \Rightarrow 173E Smooth = Art. 0709 **L**

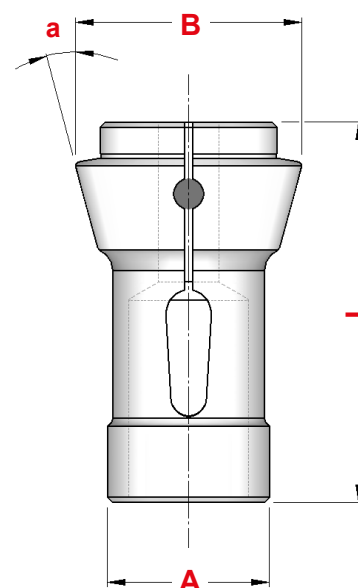
Tonda Round	Esagonale Hexagonal	Quadra Square
		
Art.	Art.	Art.

PINZE DI CHIUSURA A CONO SEMPLICE

SINGLE CONE CLAMPING COLLETS

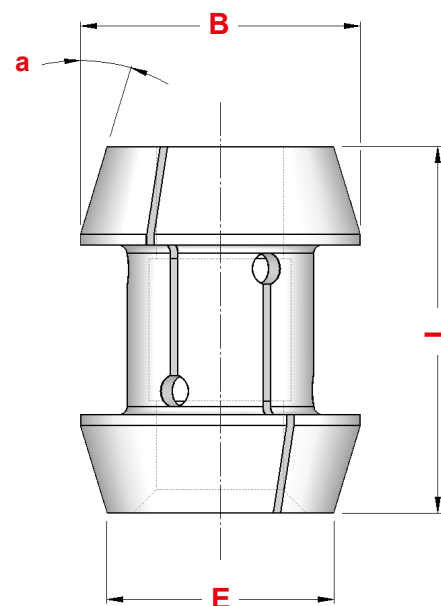
DIN 6343

Art.	Art.	Art.	A	B	L	α	\varnothing max	\varnothing max	\varnothing max	Einheits
1072	—	—	6,0	10,0	30,0	15°	4,5	—	—	100E
5293	—	—	7,0	10,7	26,0	15°	5,0	—	—	1020E
0721	—	—	8,0	12,0	42,0	16°	6,5	—	—	101E
0725	0949	5000	10,0	15,5	47,5	20°	8,0	6,0	5,0	109E
5232	—	—	10,0	16,0	43,0	15°	7,0	—	—	110E
0347	—	—	12,0	14,5	21,0	16°	8,0	—	—	—
0749	—	—	12,0	17,0	27,0	20°	10,0	—	—	—
1132	—	—	12,0	18,0	64,0	16°	10,0	8,0	7,0	—
0940	0941	0943	13,0	19,0	64,0	16°	10,0	8,0	7,0	116E
0740	0741	0742	14,0	18,0	46,0	13°	10,0	9,0	8,0	117E
0730	—	—	15,0	19,2	24,0	15°	12,0	—	—	—
0722	0723	0724	15,0	21,0	64,0	16°	12,0	10,0	9,0	120E
5308	5309	5310	15,0	22,0	47,0	20°	11,0	9,0	8,0	121E
0913	0914	0915	16,0	22,0	55,0	15°	12,5	11,0	9,0	123E
0813	—	—	17,5	22,0	51,0	15°	14,0	10,0	8,0	125E
5034	5577	—	18,0	24,0	64,0	16°	14,0	12,0	10,0	1248E
0867	0868	0869	18,0	25,0	67,0	15°	13,0	10,0	9,0	127E
0731	—	—	20,0	25,2	28,0	15°	18,0	—	—	—
0954	0955	0956	20,0	26,0	54,0	15°	16,0	12,0	10,0	136E
5299	5300	5301	20,0	27,5	60,0	15°	17,0	15,0	12,0	1299E
0937	0938	0939	20,0	28,0	67,0	16°	16,0	14,0	11,0	138E
0743	0744	0745	22,0	28,0	67,0	13°	16,0	14,0	12,0	139E
0705	0707	0706	22,0	30,0	55,0	15°	18,0	14,0	12,0	140E
5302	5303	5304	22,0	32,0	66,0	16°	17,0	14,0	12,0	1323E
0732	—	—	25,0	30,0	34,0	15°	20,0	17,0	14,0	—
0671	0672	0673	25,0	31,0	54,0	15°	21,0	18,0	15,0	143E
0846	0847	0848	25,0	34,0	65,0	15°	20,0	17,0	14,0	144E
0717	0719	0718	25,0	35,0	77,0	16°	20,0	17,0	15,0	145E
0746	0747	0748	26,0	32,0	67,0	13°	20,0	18,0	15,0	146E
0901	0902	0903	27,0	38,0	72,7	15°	22,0	20,0	16,0	147E
0713	0715	0714	28,0	38,0	70,0	15°	23,0	20,0	17,0	148E
0931	0932	0933	30,0	38,0	65,0	15°	26,0	22,0	18,0	1446E
0727	0728	0729	30,0	42,0	80,0	16°	25,0	23,0	19,0	157E
5305	5306	5307	32,0	40,0	65,0	15°	26,0	23,0	19,0	1473E
5435	—	—	32,0	42,0	80,0	15°	28,0	22,0	18,0	—
0701	0703	0702	32,0	45,0	75,0	15°	26,0	24,0	20,0	161E
0615	0616	0617	35,0	43,0	70,0	15°	25,0	24,0	20,0	162E
0764	0766	0765	35,0	48,0	80,0	15°	30,0	27,0	22,0	163E
0827	0828	0830	36,0	48,0	90,0	15°	30,0	27,0	22,0	—
0970	0972	0973	37,0	47,0	92,0	16°	32,0	27,0	22,0	1536E
0837	0839	0838	38,0	50,3	86,0	15°	32,0	28,0	25,0	—
0919	0920	0921	38,1	49,0	107,5	15°	32,0	27,0	22,0	164E
0861	0862	0863	42,0	55,0	94,0	15°	37,0	32,0	26,0	171E
0709	0711	0710	48,0	60,0	94,0	15°	42,0	38,0	30,0	173E
0666	0667	0668	52,0	63,0	92,0	15°	46,0	38,0	32,0	—
2424	2425	2426	58,0	70,0	94,0	15°	52,0	45,0	36,0	177E
0859	0870	0872	60,0	72,0	102,0	15°	52,0	46,0	36,0	—
0759	0760	0761	66,0	84,0	110,0	15°	60,0	52,0	42,0	185E
0647	0648	0649	80,0	98,0	115,0	15°	70,0	60,0	50,0	—
0826	0829	0831	88,0	106,0	115,0	15°	80,0	68,0	56,0	190E
0851	0852	0853	90,0	107,0	130,0	15°	80,0	68,0	56,0	193E
0681	0683	0684	95,0	117,0	125,0	15°	80,0	68,0	56,0	—
0959	0962	0964	115,0	135,0	140,0	15°	100,0	86,0	70,0	—



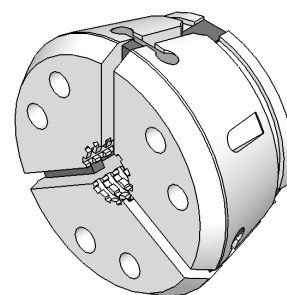
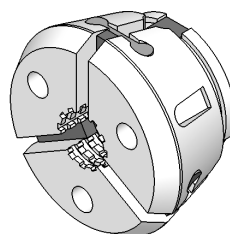
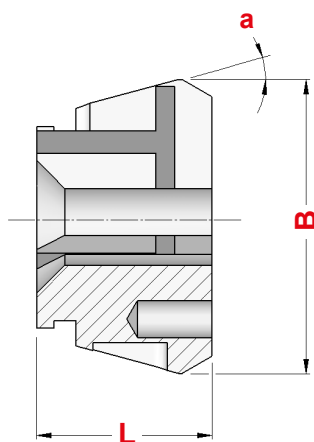
PINZE DI CHIUSURA A DOPPIO CONO DOUBLE CONE CLAMPING COLLETS

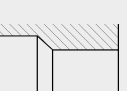
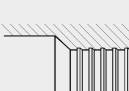
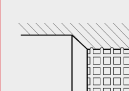


Tonda Round	Esagonale Hexagonal	Quadra Square							
Art.	Art.	Art.	B	L	E	α	\varnothing max	\varnothing max	\varnothing max
0843	0844	0845	26,0	55	18,0	25°	15,0	13,0	11,0
5337	5338	5339	34,0	56	27,0	17° 30'	26,0	22,0	18,0
0704	0696	0697	34,5	74	28,0	25°	26,0	22,0	18,0
0916	0917	0918	40,5	75	33,0	25°	30,0	25,0	21,0
0883	0884	0885	42,0	82	37,5	17°	30,0	27,0	21,0
0753	0754	0755	50,0	80	39,0	20°	36,0	32,0	25,0
0739	0757	0758	60,0	80	49,0	17°	45,0	38,0	30,0
0756	0762	0763	71,6	100	60,0	17°	55,0	46,0	38,0
0854	0855	0856	70,0	80	60,0	16°	52,0	45,0	35,0
0822	0824	0825	81,0	90	70,0	17°	60,0	52,0	40,0
0927	0928	5053	91,0	100	80,0	17°	70,0	60,0	50,0
0892	0894	0899	108,0	105	95,0	17°	80,0	68,0	56,0
0934	0944	0946	130,0	120	115,0	17°	100,0	86,0	70,0



TESTE DI SERRAGGIO AD INNESTO FRONTALE FRONT LOCK CLAMPING HEADS

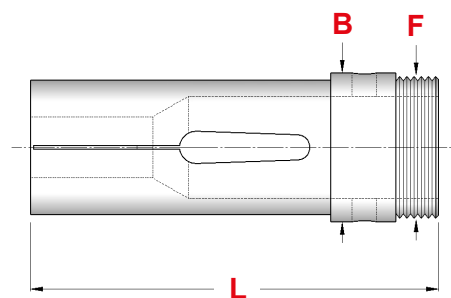
TSH



Tipo	Tonda Round	Esagonale Hexagonal	Quadra Square	B	L	α						Einheits
	Art.	Art.	Art.				LISCIO SMOOTH	RIGATO GROOVED	QUADRETTATO SERRATED	max	max	
TSH.32 G	2090	—	—	57,8	44	12°	6 ÷ 32	—	—	—	—	771E
TSH.32	2091	2092	2097	57,8	47	12°	6 ÷ 7	8 ÷ 11	12 ÷ 32	27,0	22,0	772E
TSH.42 G	2173	—	—	79,3	42	15°	6 ÷ 42	—	—	—	—	781E
TSH.42	2174	2175	2646	79,3	47	15°	6 ÷ 7	8 ÷ 11	12 ÷ 42	36,0	30,0	782E
TSH.52	2203	2204	2205	79,3	46	15°	6 ÷ 52	8 ÷ 11	12 ÷ 52	45,0	36,0	783E
TSH.65 G	2321	—	—	99,5	53	15°	6 ÷ 65	—	—	—	—	787E
TSH.65	2322	2323	2383	99,5	58	15°	6 ÷ 7	8 ÷ 11	12 ÷ 65	56,0	46,0	788E
TSH.80	2647	2648	2649	114,5	53	15°	6 ÷ 80	8 ÷ 11	12 ÷ 80	68,0	56,0	791E
TSH.100	2651	2652	2653	144,5	59	15°	42 ÷ 100	—	42 ÷ 100	86,0	70,0	797E

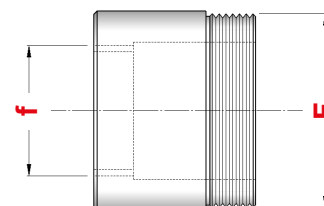
CONTROPINZE DI AVANZAMENTO FEED FINGERS

**DIN
6344**



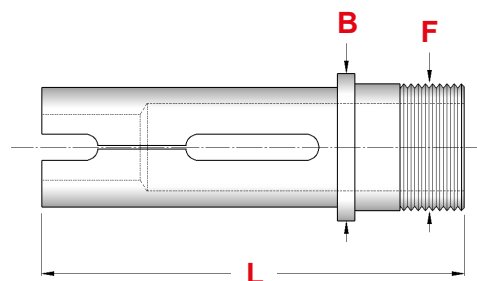
Tonda Round	Esagonale Hexagonal	Quadra Square	Art.	Art.	Art.	B	L	F	∅ max	∅ max	∅ max	Einheits
0603	0604	0605	18	70	M 16 x 1	12,0	11,0	9,0	207E			
0874	0875	0876	24	85	M 22 x 1	19,0	17,0	12,0	220E			
0905	0906	5243	30	95	M 28 x 1	25,0	22,0	17,0	236E			
0612	0613	0614	31	90	M 29 x 1	25,0	22,0	19,0	237E			
0877	0878	0879	42	116	M 40 x 1	36,0	32,0	26,0	254E			
0922	0923	0924	46	123	M 43 x 0,75 SX	40,0	34,0	28,0	258S			
0880	0881	0882	60	140	M 58 x 1	52,0	45,0	36,0	273E			

RIDUTTORE REDUCTION



Art.	Tipo	F	f
2749	INDEX 25 riduzione a INDEX 18	M 29 x 1	M 22 x 1
2750	INDEX 36/B42 riduzione a INDEX 24/B30	M 40 x 1	M 28 x 1
2751	INDEX 36/B42 riduzione a INDEX 25	M 40 x 1	M 29 x 1
2761	INDEX 52/B60 riduzione a INDEX 36/B42	M 58 x 1	M 40 x 1

CONTROPINZE DI AVANZAMENTO PER MANDATA ESTERNA EXTERNAL FEED FINGERS



Tonda Round	Esagonale Hexagonal	Quadra Square	Art.	Art.	Art.	B	L	F	∅ max	∅ max	∅ max	Einheits
0905L	0906L	5243L	42	120	M 36 x 1,5	30,0	26,0	21,0	242E			
0877L	0878L	0879L	56	138	M 50 x 1,5	42,0	36,0	29,0	259E			
0880L	0881L	0882L	75	138	M 68 x 1,5	60,0	52,0	42,0	278E			

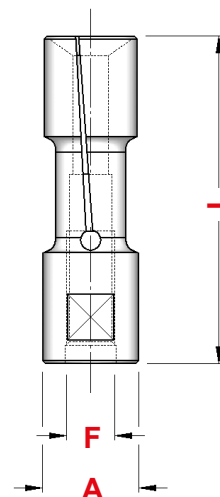


PINZE per CARICATORI CUCCHI

CLAMPING SLEEVES FOR CUCCHI BAR-FEEDERS

Art.	A	L	∅ min	∅ max	F destro
0600	10,0	50	2	8,5	M 6 x 0,75 DX
0601	12,0	52	2	10,5	M 7 x 0,75 DX
0925	14,0	52	2	12,5	M 8 x 1 DX
0174	15,0	52	2	13,5	M 8 x 1 DX
0553	16,0	52	4	14,0	M 8 x 1 DX
0591	20,0	59	3	18,0	M 10 x 1 DX
	22,0	59	19	20,0	
0893	25,0	59	4	23,0	M 14 x 1 DX
1049	30,0	65	10	28,0	M 18 x 1,5 DX
0904	40,0	70	6	37,0	M 25 x 1,5 DX
	42,0	70	38	39,0	
0935	46,0	72	37	42,0	M 25 x 1,5 DX
0945	60,0	80	30	55,0	M 25 x 1,5 DX
0708	65,0	80	55	60,0	M 25 x 1,5 DX
	69,5	80	61	65,0	
	75,0	80	66	70,0	

Art.	A	L	∅ min	∅ max	F sinistro
0607	19,0	60	4	16,0	M 10 x 1 SX
	20,0	60	17	18,0	
0621	23,0	60	4	20,0	M 14 x 1 SX
	25,0	60	21	23,0	
0632	29,0	65	4	26,0	M 18 x 1,5 SX
0646	35,0	70	14	33,0	M 18 x 1,5 SX
0653	37,0	70	10	34,0	M 25 x 1,5 SX
	39,0	70	35	36,0	
	41,0	70	37	39,0	
0654	47,0	70	14	43,0	M 30 x 1,5 SX
	49,0	70	44	45,0	
0690	59,0	80	30	55,0	M 30 x 1,5 SX

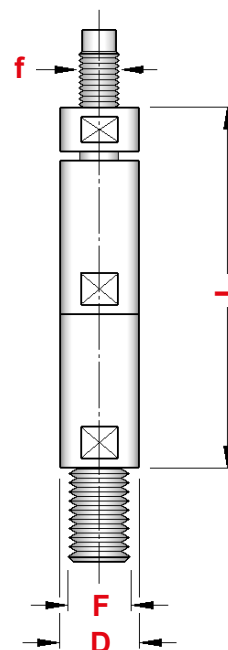


GRUPPI ROTANTI

ROTARY SETS

Art.	D	L	F destro	f destro
1539	10,0	107	M 7 x 1 DX	M 6 x 0,75 DX
1540	12,0	107	M 8 x 1,25 DX	M 7 x 0,75 DX
2199	14,0	107	M 10 x 1,5 DX	M 8 x 1 DX
2200	16,0	107	M 10 x 1,5 DX	M 8 x 1 DX
1541	19,0	118	M 12 x 1,75 DX	M 10 x 1 DX
1543	25,0	118	M 20 x 1,5 DX	M 14 x 1 DX
1544	30,0	123	M 24 x 1,5 DX	M 18 x 1,5 DX
1545	40,0	61	M 28 x 1,5 DX	M 25 x 1,5 DX

FORNIBILI ANCHE NELLA VERSIONE CON FILETTO SINISTRO
AVAILABLE ALSO IN LEFT THREAD VERSION

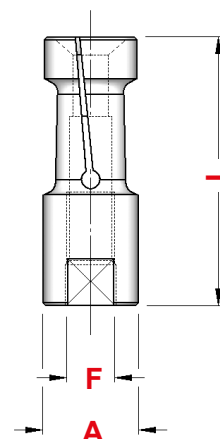




PINZE per CARICATORI IEMCA

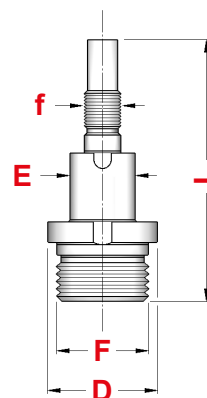
CLAMPING SLEEVES FOR IEMCA BAR-FEEDERS

Art.	A	L	∅ min	∅ max	F destro
0594	7,5	40	2	6,5	M 5 x 0,5 DX
0897	10,0	40	2	8,5	M 6 x 0,75 DX
0593	12,0	42	2	10,5	M 7 x 0,75 DX
0592	15,0	42	2	13,5	M 8 x 1 DX
0929	16,0	42	3	14,0	M 8 x 1 DX
0591	20,0	59	3	18,0	M 10 x 1 DX
	22,0	59	19	20,0	
0891	25,0	59	4	23,0	M 10 x 1 DX
0823	30,0	65	8	28,0	M 10 x 1 DX
	32,0	65	29	30,0	
0904	40,0	70	6	37,0	M 25 x 1,5 DX
	42,0	70	38	39,0	
0935	46,0	72	37	42,0	M 25 x 1,5 DX
0945	60,0	80	30	55,0	M 25 x 1,5 DX
0708	65,0	80	55	60,0	M 25 x 1,5 DX
	69,5	80	61	65,0	
	75,0	80	66	70,0	



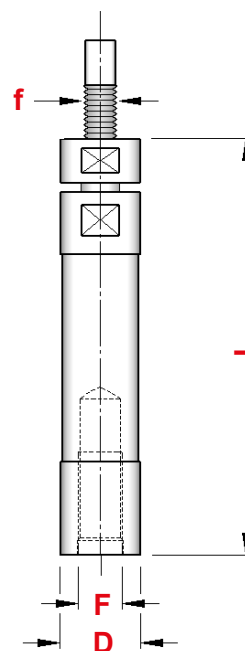
RIDUTTORE REDUCTION

Art.	D	L	F destro	f destro	E
1260	30,0	72	M 25 x 1,5 DX	M 10 x 1 DX	18



GRUPPI ROTANTI ROTARY SETS

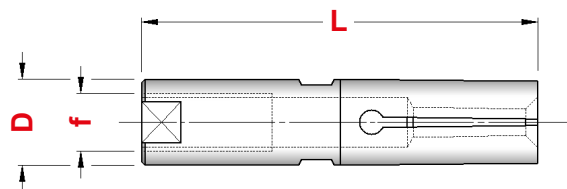
Art.	D	L	F destro	f destro
2621	7,5	126	M 6 x 0,75 DX	M 5 x 0,5 DX
2622	10,0	113	M 8 x 1 DX	M 6 x 0,75 DX
2623	12,0	116	M 10 x 1 DX	M 7 x 0,75 DX
2624	15,0	121	M 12 x 1,5 DX	M 8 x 1 DX
2625	20,0	133	M 14 x 1,5 DX	M 10 x 1 DX
2626	25,0	133	M 14 x 1,5 DX	M 10 x 1 DX
2627	30,0	135	M 14 x 1,5 DX	M 10 x 1 DX



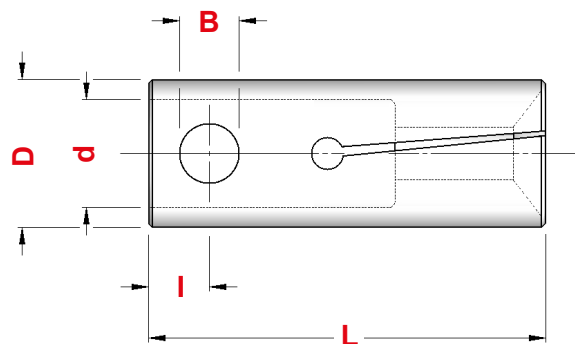
ALTRE PINZE per CARICATORE

OTHER CLAMPING SLEEVES FOR BAR-FEEDER

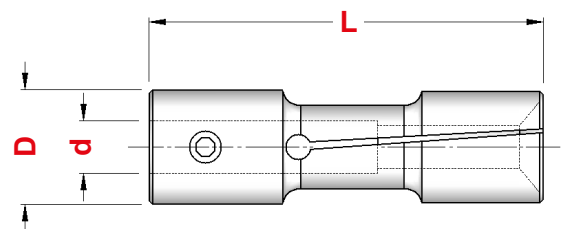
Tonda Round						
Art.	D	L	f	∅ min	∅ max	Einheits
1308	5,0	37	M 4	1,5	4,0	200E
1309	6,0	30	M 4	1,5	4,5	—
1386	7,0	30	M 4	2,0	5,0	—
1387	7,0	37	M 5	2,0	5,5	208E
1388	10,0	30	M 5	2,0	8,0	—
1415	12,0	30	M 6	3,0	9,5	—
1446	12,5	30	M 6	9,5	10,5	—
1470	16,5	35	M 8	4,0	14,5	—



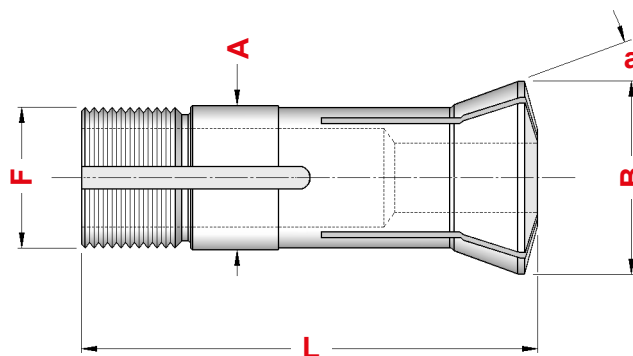
Tonda Round								
Art.	D	L	d	B	l	∅ min	∅ max	Einheits
1647	10	40	7 - H7	4,1	6	2,0	8,0	210E
1663	12	40	8 - H7	4,1	6	3,0	10,0	212E
1676	15	40	11 - H7	6,1	6	2,0	13,0	203E
1744	18	40	11 - H7	6,1	6	3,0	16,0	203E-18
1861	20	65	14 - H7	8,1	7	4,0	18,0	225E
1863	25	65	20 - H7	8,1	7	4,0	23,0	222E
1869	32	65	20 - H7	8,1	7	8,0	30,0	—



Tonda Round						
Art.	D	L	d	∅ min	∅ max	Einheits
1512	25	90	20 - H7	3,0	22,0	2292E
1549	32	90	20 - H7	4,0	30,0	2422E
1566	36	90	20 - H7	5,0	33,0	2490E



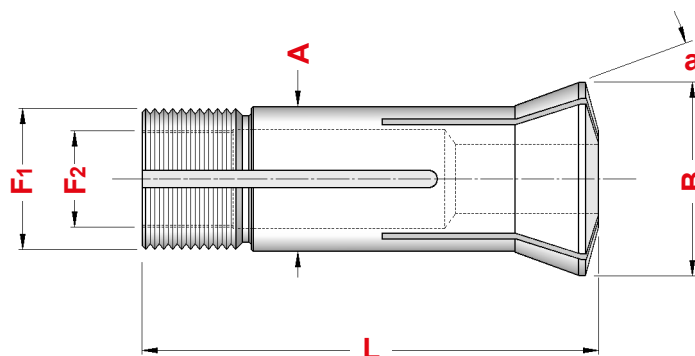
PINZE TIRATE CON FILETTO ESTERNO
DRAWBACK COLLETS WITH EXTERNAL THREAD






Tonda Round	Esagonale Hexagonal	Quadra Square	Art.	Art.	Art.	A	B	L	α	F	\varnothing max	W	Einheits
0958	—	—	6,0	10,5	31,0	20°	5,00 x 36 f" 55°	6,0	—	304E			
0965	—	—	8,0	13,0	35,5	20°	6,82 x 0,62 55°	8,0	—	302E			
4010	—	—	10,0	14,0	43,6	15°	9,83 x 0,83 45/5°	7,0	W10	314E			
0948	—	—	12,0	16,0	46,0	15°	11,75 x 1,25 45/5°	10,0	W12	318E			
0693	0694	0695	13,0	16,0	41,5	15°	M 12,5 x 0,75	10,0	—	—			
4011	—	—	15,0	20,2	58,3	15°	14,75 x 1,25 45/5°	12,0	W15	3213E			
0750	—	—	15,0	21,5	55,0	20°	M 13 x 1,00	13,0	—	324E			
0800	—	—	20,0	26,3	73,0	15°	19,70 x 1,66 45/5°	20,0	W20	349E			
0966	—	—	20,0	28,0	122,0	17°30'	19,70 x 2,00 45/5°	20,0	—	355E			
0644	—	—	25,0	33,5	87,0	16°	M 23 x 1,50	22,0	—	—			
0751	—	—	25,0	33,5	88,0	16°	M 23 x 1,00	22,0	—	363E			
0674	—	—	25,0	33,7	97,6	15°	24,70 x 15 f" 45/5°	25,0	W25	364E			
0834	0835	0836	27,0	30,0	57,5	12°	M 24 x 1,00	20,0	—	—			
5522	5530	5580	31,75	37,3	87,0	10°03'	31,40 x 20 f" 60°	26,0	W 31,75	385E			
0597	0598	0599	35,0	44,0	103,0	20°	M 32 x 1,50	26,0	—	—			
0733	0734	0735	40,0	55,0	117,0	20°	35,00 x 1,55 45/5°	30,0	—	—			

PINZE TIRATE CON FILETTO ESTERNO ED INTERNO
DRAWBACK COLLETS WITH EXTERNAL AND INTERNAL THREAD

5 C

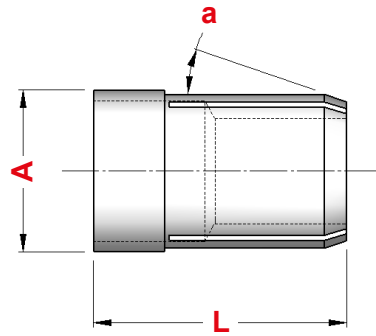


Tonda Round	Art.	A	B	L	α	F1	F2	\varnothing max	Tipo
5523	31,75	37,3	87,0	10°03'	31,4 x 20 f" 60°	26,59 x 24 f"	26,0	5C	


Tonda <i>Round</i>	Esagonale <i>Hexagonal</i>	Quadra <i>Square</i>
		
Art.	Art.	Art.
0957	0832	0833
0950	0951	0952

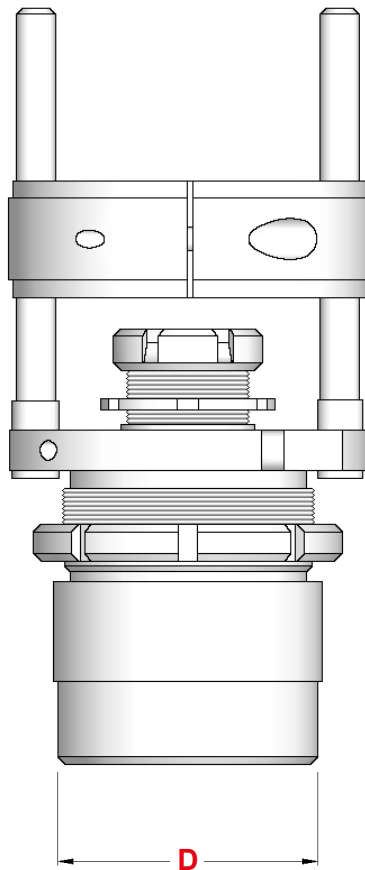
PINZE PER ROTANTI COLLETS FOR ROTARIES

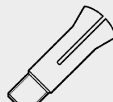
A	L	α
16	35	19°
32	45	19°




APPARECCHI GIREVOLI SWIVEL DEVICES

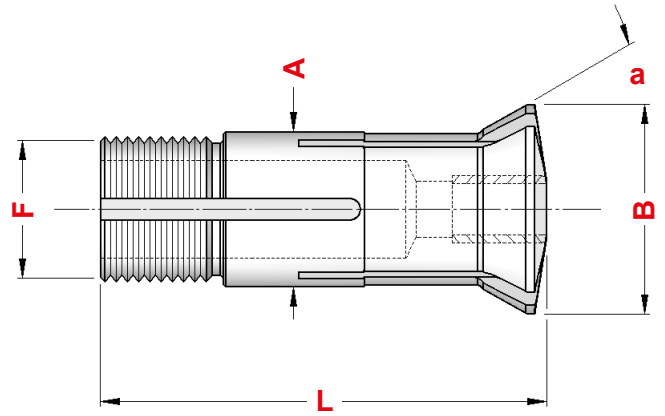
STROHM			
Art.	D	Tipo	
0061	40	STROHM 125	0957
0062	68	STROHM 205	0950
0063	68	STROHM 255	0950




BECHLER			
Art.	D	Tipo	
0065	34	BECHLER 10	0693
0066	56	BECHLER 20	0834

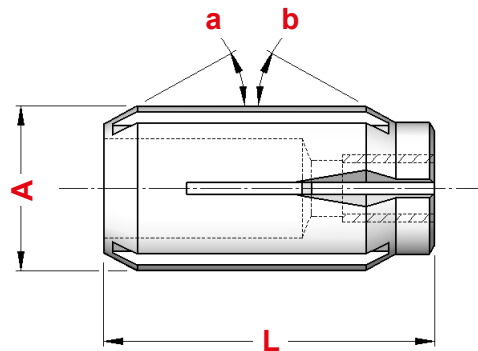
BUSSOLE GUIDA BARRA REGISTRABILI IN METALLO DURO - TIPO TIRATO
EXTERNAL THREAD ADJUSTABLE GUIDE BUSHINGS WITH SOLID CARBIDE

Tonda Round						
	Art.	A	L	B	α	F
	0698	9	44,0	12,5	16°	M 8 x 0,75
	0655	12	50,0	16,0	16°	M 10 x 0,75
	0686	12	50,0	15,0	30°	M 12 x 1,00
	0909	16	59,0	20,5	16°	M 14 x 1,00
	0687	18	60,0	21,8	30°	M 16 x 1,00
	0688	20	55,0	25,0	30°	M 20 x 1,00
	0799	22	68,0	29,0	16°	M 19 x 1,00
	0926	22	68,0	29,0	16°	M 22 x 1,00
	4040	24	61,0	30,0	30°	M 24 x 1,00
	0602	28	81,0	38,0	30°	M 25 x 1,00
	0699	28	82,0	34,0	16°	M 25 x 1,00
	0803	32	71,0	40,0	30°	M 32 x 1,00
	0812	34	87,5	41,0	10°	M 34 x 1,00
	0689	40	71,0	48,0	30°	M 40 x 1,00
	0930	42	82,0	49,0	16°	M 40 x 1,00




BUSSOLE GUIDA BARRA REGISTRABILI IN METALLO DURO - TIPO SPINTO
PUSH ADJUSTABLE GUIDE BUSHINGS WITH SOLID CARBIDE

Tonda Round					
	Art.	A	L	α	b
	0691	16	40	30°	30°
	0692	20	40	30°	30°
	0887	30	60	29°	29°
	0888	34	60	29°	29°



BUSSOLE GUIDA BARRA IN METALLO DURO - TIPO FISSO
FIXED GUIDE BUSHINGS WITH SOLID CARBIDE

Tonda Round			
	Art.	A	L
	4028	13	30
	0677	15	30
	0678	16	30
	0679	20	30
	0680	25	35
	0682	32	45

